

01

Kelvin Hall

A unique partnership between Glasgow Life, the University of Glasgow and the National Library of Scotland has resulted in this historic building being transformed into an exciting new centre of cultural excellence. Your clients can visit Kelvin Hall for free and see the National Library of Scotland's Moving Image Archive or take a tour of the Glasgow Museums' and the Hunterian's store, and also enjoy a state-of-the-art Glasgow Club health and fitness centre.

1445 Argyle Street
Glasgow, G3 8AW

www.kelvinhall.org.uk

Distance between Kelvin Hall and Clydeside Distillery is 1.5 miles/2.4km

The Clydeside Distillery

A Single Malt Scotch Whisky distillery, visitor experience, café, and specialist whisky shop in the heart of Glasgow. As Glasgow's first dedicated Single Malt Scotch Whisky Distillery for over 100 years, your clients can choose a variety of tours, including whisky and chocolate pairing. Your clients can also enjoy a visit to the shop and can even purchase a personalised, bespoke bottle of whisky, as well as a premium selection of whiskies. Private venue hire available.

100 Stobcross Road
Glasgow, G3 8QQ

www.theclydeside.com

[Link to Trade Website](#)



Distance between Clydeside Distillery and The Burrell Collection is 5.6 miles/9km



The Burrell Collection

One of the greatest art collections ever amassed by Sir William Burrell and consists of more than 8,000 objects. Housed in a new home in Glasgow's Pollok Country Park, the Burrell's renaissance will see the creation of an energy efficient, modern museum that will enable your clients to enjoy and better connect with the collection. The displays range from work by major artists, including Rodin, Degas and Cézanne, to Chinese art, medieval treasures and over 200 tapestries.

Pollok Country Park
2060 Pollokshaws Road
Glasgow. G43 1AT

www.burrellcollection.com

[Link to Trade Website](#)



Distance between The Burrell Collection and Glasgow city centre is 5 miles/8km



Glasgow Music City Tours

Glasgow Music City Tours is an entertaining guided walk around the music hot spots of the city centre. Take your clients on a walk with Glasgow Music City Tours and explore their dive bars, flagship concert halls and the ghosts of long-gone gig venues. From the Royal Concert Hall to King Tut's, the birthplace of Oasis, the Music Mile tour is a whistle-stop guide around Glasgow city centre, an area teeming with music venues past and present.

Glasgow
Scotland

glasgowmusiccitytours.com

[Link to Trade Website](#)



Although we make every effort to ensure that our itineraries, and the linked Google My Maps, are accurate, the information is subject to change. The most up to date information is available direct from the listed establishments.



Groups
8–12
people



Groups
up to 24
people



All groups
all sizes

FIT

Free
independent
travellers



Languages
spoken



Seasonal Opening
(as noted)
Winter by
appointment



Open all year



Accessible
access



Green Tourism
Business
scheme

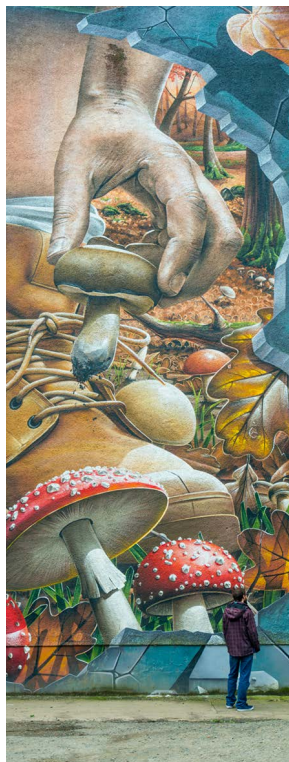


Coach
parking
available

02

Walking Tours in...Scotland - Discover Glasgow's Street Art

Your clients can discover a different side to Glasgow on this street art and modern culture tour. On this 2 hour-walk there are no cathedrals, grand buildings or monuments, this is the real Glasgow. Your clients will meander down alleys and under bridges to uncover some of the city's most beautiful pieces of art that are taking over the walls by storm. From world-renowned heroes to local artists you'll hear the stories and inspiration behind each piece whilst learning about the scene in Glasgow art. Walking tours in... Scotland have more tours in Glasgow and also offer tours in Inverness, St Andrews, Stirling, Edinburgh, Oban, Aberdeen and South Queensferry.



George Square
Glasgow, G2 1AL

www.walkingtoursin.com

[Link to Trade Website](#)



The National Piping Centre

Have you ever wondered how hard it is to play the bagpipes? At the National Piping Centre your clients can find out with a simple introduction to playing Scotland's national instrument. They will be welcomed by a Scottish bagpiper and given a full tour of the museum before being given a full demonstration and opportunity to try it for themselves.

30-34 McPhater Street
Glasgow, G4 0HW

www.thepipingcentre.co.uk

[Link to Trade Website](#)



Distance between the National Piping Centre and House for an Art Lover is 3.5miles/5.6km

House for an Art Lover

Originally designed by the internationally renowned architect Charles Rennie Mackintosh and is situated in Bellahouston Park. The exterior of the House for an Art Lover has been realised in materials and craftsmanship as closely as possible to Mackintosh's 1901 designs. Inside, your clients can visit the entire layout of rooms. Mackintosh and his wife provided detailed interior designs for the double-height Entrance Hall, Dining Room, Oval Room and Music Room.

Bellahouston Park
10 Dumbreck Road
Glasgow, G41 5BW

www.houseforanartlover.co.uk

[Link to Trade Website](#)



Distance between House of an Art Lover and Kelvingrove Art Gallery and Museum is 4miles/6.4km



Kelvingrove Art Gallery and Museum

If there is somewhere your clients must visit in Glasgow, then a trip to this iconic 1901 West End landmark is not to be missed. It offers a captivating experience spanning 22 galleries, showcasing diverse treasures, from classic European art to contemporary Scottish works, Egyptian mummies, armour, Asian and African artefacts, to natural history specimens. The museum is a cultural gem.

Argyle Street
Glasgow, G3 8AG

www.glasgowlife.org.uk/museums/kelvingrove-art-gallery-and-museum

[Link to Trade Website](#)



Distance between Kelvingrove Art Gallery and Museum and New Lanark Mill is 33.2 miles/53.4km

Although we make every effort to ensure that our itineraries, and the linked Google My Maps, are accurate, the information is subject to change. The most up to date information is available direct from the listed establishments.



Groups
8—12
people



Groups
up to 24
people



All groups
all sizes

FIT

Free
independent
travellers



Languages
spoken



Seasonal Opening
(as noted)
Winter by
appointment



Open all year



Accessible
access



Green Tourism
Business
scheme



Coach
parking
available

03

New Lanark Mill

New Lanark World Heritage Site is a unique 18th century Mill Village sitting alongside the River Clyde. Founded in 1785 with a focus on the welfare of mill workers, New Lanark became a model for industrial communities until the last mill closed in the 1960s. A subsequent restoration programme resulted in New Lanark becoming a World Heritage Site in 2001. At the visitor centre, your clients can learn the story of the mill, while nearby is the Falls of Clyde wildlife reserve with its birds of prey and waterfalls. Partially accessible.

Mill One

New Lanark Mills

Lanark, ML11 9DB

www.newlanark.org

[Link to Trade Website](#)



Distance between New Lanark and National Museum of Rural Life is 28.1 miles/45.2km



National Museum of Rural Life

Explore life in the countryside at this five-star museum, historic farmhouse and working farm. In the museum, learn about the land, people and ways of working that have shaped Scotland's rural history, and discover Scotland's largest collection of tractors and other farming machinery. Your clients can take a short walk or tractor-trailer ride from the museum through the working farm. Your clients can also meet the animals, and then visit the Georgian farmhouse where Lanarkshire's Reid family lived for ten generations.

Philipshill Road

East Kilbride, G76 9HR

www.nms.ac.uk

[Link to Trade Website](#)



Distance between National Museum of Rural Life and Whitelee Windfarm Visitor Centre is 7.5 miles/12km

Whitelee Windfarm Visitor Centre

The fascinating visitor centre at Whitelee, the UK's largest onshore windfarm, just 20 minutes outside Glasgow, offers exhibits about renewable energy and the chance to see the turbines at work. Its 215 turbines are capable of generating up to 539 megawatts of electricity on a windy day. Your clients can also find 130 kilometres of trails to explore by foot, cycle, horse, or bus. Your clients can enjoy panoramic views of the windfarm or even sit at the picnic benches on the viewing deck if the sun is shining.

Moor Road

Eaglesham

Glasgow, G76 0QQ

www.whiteleewindfarm.co.uk

Distance between Whitelee Windfarm Visitor Centre and Dumbarton Castle is 32.4 miles/52.1km

Dumbarton Castle

Dumbarton Castle is located in the ancient Kingdom of Strathclyde and is spectacularly sited on a volcanic rock overlooking the River Clyde. Your clients will conquer more than 500 steps to stand atop one of Scotland's greatest strongholds. The iconic Rock of the Clyde has heritage as breathtaking as its views over the River Clyde, Loch Lomond and Argyll. Your clients can admire great examples of 18th century Georgian military architecture and stunning views from the Tower Crag. Check website for opening days.

Castle Road

Dumbarton

Dunbartonshire, G82 1JJ

www.historicenvironment.scot

[Link to Trade Website](#)



Although we make every effort to ensure that our itineraries, and the linked Google My Maps, are accurate, the information is subject to change. The most up to date information is available direct from the listed establishments.



Groups
8–12
people



Groups
up to 24
people



All groups
all sizes



Free
independent
travellers



Languages
spoken



Seasonal Opening
(as noted)
Winter by
appointment



Open all year



Accessible
access



Green Tourism
Business
scheme



Coach
parking
available

FOOD AND DRINK SUGGESTIONS

The Pipers' Tryst

Connected to The National Piping Centre, guests can experience delicious Scottish fayre with a contemporary twist, with traditional favourites such as Haggis, Neeps & Tatties.

Windows Restaurant

Located on the 7th floor of the Carlton George Hotel, Windows is the only rooftop restaurant in Glasgow. The head chef and his team create a variety of delicious dishes using fine, locally sourced ingredients.

The Willow Tea Rooms

Modelled on Kate Cranston's Ingram Street Tea Rooms. They offer varied services from breakfast, lunch, afternoon tea, cakes & scones, tea or coffee.

Mharsanta Restaurant

Situated in the heart of Glasgow's Merchant City, Mharsanta offers an excellent selection of new and traditional Scottish themed dishes.

WEST Brewery

WEST's state-of-the-art brewery resides within the winding house of the magnificent Templeton Building overlooking Glasgow Green and produces award-winning, German-style lagers and wheat beers.

Òran Mór

Formerly Kelvinside Parish Church, Òran Mór, Gaelic for great melody of life or big song, is a thriving arts & entertainment venue in the heart of Glasgow's West End.

Red Bus Bistro

Climb aboard our vintage 1966 Routemaster bus for a selection of onboard dining experiences: from a traditional afternoon tea with a glass of Prosecco or a delicious signature gin cocktail served in traditional tea pots.

The Glasgow Food & Drink Tour

Come join them on an award-winning food walking tour and explore the thriving food scene of Glasgow's leafy West End. With their tours your clients will be tasting an eclectic mix of quality Scottish food and drink.

Eat Walk Glasgow

Eat Walk Glasgow offer food walking tours that visit five city centre venues, tasting locally sourced Scottish food and drink. Your local guide will talk about the rich history of the City of Glasgow as you walk between stops.

ACCOMMODATION SUGGESTIONS

Glasgow Grosvenor Hotel

4-star hotel adjacent to the Botanic Gardens with 97 rooms and 5 meeting rooms from boardrooms to ornated ballrooms.



Voco Grand Central Hotel

4-star hotel adjoining Central Station with 243 bedrooms. Perfectly suited for meetings, conferences, events and weddings, the hotel has 21 flexible event spaces.

Crowne Plaza Hotel

4-star hotel with 283 bedrooms, 15 meeting rooms and an on-site fitness centre with a spa and indoor pool.

Fraser Suites Glasgow

4-star serviced apartments with 98 individual apartments in the Merchant City, Glasgow's cultural quarter.



Radisson Blu

4-star hotel with 247 bedrooms, 12 of which are accessible. Adjacent to train and bus links, the hotel has a meeting and events floor with 12 air-conditioned rooms.



Hotel du Vin

5-star hotel set in a tree-lined Victorian terrace in the fashionable West End. The hotel has 49 bedrooms and suites, 6 meeting rooms with a private garden and exclusive use of the Townhouse No.5.



Ibis Glasgow City Centre

3-star hotel with 141 bedrooms with connecting rooms available and a restaurant/bar open 24/7. Excellent location for shopping with the Buchanan Galleries within 10 minutes' walk.



Novotel Glasgow Centre

4-star hotel with 141 bedrooms, 6 meeting rooms and leisure facilities including sauna, gym and steam room. A modern, contemporary hotel ideally located in the heart of the city.



Yotel Glasgow

3-star hotel with 267 bedrooms, a rooftop VEGA bar, restaurant and event space with a 4-lane bowling alley. Yotel is just opposite Glasgow's Central Station.

DoubleTree by Hilton Glasgow Central

4-star hotel with 300 elegant bedrooms and suites, 11 flexible function rooms and a leisure club with indoor pool, steam room, sauna and fitness centre.



Green Tourism Award

Businesses that work in a sustainable, environmentally friendly way are graded: Bronze, Silver or Gold

VISITSCOTLAND'S WEBSITES

Our travel trade website offers the travel industry a one-stop-shop for Scotland information, inspiration and tool kits. The site is designed to assist tour operators and agents to sell destination Scotland more effectively to their clients.

Travel trade website www.visitscotlandtraveltrade.com

VisitScotland consumer site www.visitscotland.com

Information on travel trade websites:

- Inspirational itineraries
- Downloadable e-brochures and maps
- Link to multimedia library for images and videos
- Opt-in to receive our monthly travel trade e-newsletter
- A comprehensive directory of Scottish companies who have committed to special rates, discounts and commissions exclusively available for the travel trade

GENERAL WEBSITES

Britrail www.britrail.com

News & Weather information www.bbc.co.uk/weather

British Train information www.nationalrail.co.uk

Scottish Train information | Bus information www.scotrail.co.uk | www.citylink.co.uk

Historic Environment Scotland www.historicenvironment.scot

National Trust for Scotland www.nts.org.uk

Scottish Tourist Guides Association www.stga.co.uk

© VisitScotland 2025. VisitScotland has taken reasonable steps to confirm the accuracy of the information provided in this itinerary, including the associated Google My Maps link. However, details are subject to change, and users are advised to verify the most current information directly with the listed establishments.

VisitScotland accepts no responsibility for any errors, omissions, or misrepresentations contained within this publication or any content accessed via external links. VisitScotland excludes all liability for any loss or damage arising from reliance on the information provided, or from the closure or cessation of operations of any listed business for any reason. All information is accurate as of June 2025. No material may be reproduced without the prior written permission of VisitScotland